



### Upcoming Events

May 3 — 4, 2011

Gas Plastic Pipe OQ Workshop  
Register/more information: [Here](#)

May 12, 2011

Infrared Thermography Workshop  
Register/more information: [Here](#)

May 17 — 20, 2011

Electric Overhead Workshop  
(Apprentice evaluations/beginning pole climbing pre-workshop May 17)  
Register/more information: [Here](#)

May 25 — 26, 2011

Water Distribution & Leak  
Detection Workshops  
Register/more information: [Here](#)

### Infrared thermography workshop; register now

◆ There's still time to register for IAMU's all-new infrared thermography workshop. The one-day event will be held at IAMU's Training & Office Complex in Ankeny May 12. The registration deadline is May 6.



It will provide attendees with practical information and hands-on training for gathering, reading, downloading, storing and applying infrared (IR) images. An introduction to utility system applications, a discussion of cameras, camera loans and training opportunities and hands-on camera practice at IAMU's Training & Office Complex will all be part of the workshop. Trainers will include representatives from Flir and Fluke, leading IR camera companies.

A workshop brochure and registration form has been distributed; or, learn more about the workshop and register on the IAMU web site [here](#). For more information contact IAMU's Sandy Longfellow at [slongfellow@iamu.org](mailto:slongfellow@iamu.org) or 800-810-4268.

## Mapleton help: "Great testament" to IAMU mutual aid

◆ In the wake of tornado destruction in Mapleton April 9, one of the first steps in a return to normalcy was the rapid restoration of the city's electric and gas services – with the help of a coordinated response through IAMU's mutual aid system. The effort is being noted as one of the best organized and most effective IAMU mutual aid responses, and will be used for analysis and future planning.



Damage to property and utilities in Mapleton was severe.

Electric regional mutual aid coordinators Rory Weis of Denison Municipal Utilities, Dan Wilson of Ogden Municipal Utilities; and gas regional mutual aid coordinators Ken Spies of Manning Municipal Utilities, Brad Honold of Coon Rapids Municipal Utilities, John Bird of Emmetsburg Municipal Utilities and Tom Kane of Hawarden Municipal Utilities; IAMU Program Director Dave Hraha; IAMU gas specialists Rudy and Rod Parcel; and responders from 13 IAMU members utilities working with Tom Lefebvre, Mapleton Electric Superintendent and Mike Hahn, Mapleton Gas Superintendent, provided a two-phased mutual aid response and a rapid recovery of utilities in the west central Iowa city.

Electric utility professionals from Denison, Manilla, Manning, Onawa, Sergeant Bluff and Woodbine with gas operators from Guthrie Center, Harlan, Manilla, Manning and Woodbine were on the road to Mapleton the morning of April 10, the day after the tornado. Rudy and Rod Parcel also responded that day.

In addition to loss of electric and gas service in Mapleton, portions of the city's utility facilities were damaged by the tornado. But by mid-day April 10 nearly 30 electric and gas operators from IAMU's mutual aid program were hard at work alongside Mapleton officials to restore electric and gas utility service to residents. Black Hills Energy, a private gas supplier serving Mapleton, was able to quickly repair a damaged two-inch gas main, aiding recovery. The Northwest Iowa Power Cooperative (NIPCO) took responsibility for setting up an electric substation to replace one taken out by the tornado. By the end of that day, electric service was being restored throughout the city; and as the electricity began to flow, gas service was also returned.

*Continued on Page 2*

## CFU thermal imaging gives customers online access

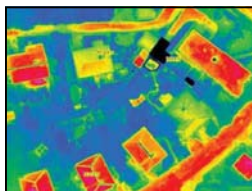


Cedar Falls Utilities

◆ Cedar Falls Utilities (CFU) has launched a new interactive thermal imaging energy tool for customers. With a few clicks on a computer, a CFU customer can pull up a thermal image of their home or business on the CFU web site to see how much energy is being lost through the roof, and determine the need for adding or replacing insulation.



Equipped with special cameras, this plane recorded aerial thermal images of Cedar Falls neighborhoods.



Images similar to this are now available to CFU customers online.

In November, 2010 a thermal flyover of the city was conducted, with aerial photos recorded by special imaging equipment in an airplane. More than 5,000 photos were taken. With the use of Geographical Information Systems (GIS) the photos were compiled into a special map which can now be viewed by CFU customers to locate their homes and determine their amount of heat loss. CFU officials will use the information to identify homes and businesses that can most benefit from improvements. CFU offers rebates for customers who purchase insulation.

The project was funded by federal stimulus funds from the Iowa Office of Energy Independence and in partnership with the University of Northern Iowa Center for Geoinformatics Training, Research, Education and Extension (GeoTREE). More information is available on the CFU web site, [www.cfu.net](http://www.cfu.net).



**IAMU's inaugural Advanced Locating Workshop saw a capacity registration and two days of indoor classroom and outdoor hands-on activities April 19 & 20.**

## Benchmarking project application deadline extended



◆ **The deadline to register for the Iowa Energy Benchmarking Pilot Project has been extended to April 30.** Sponsored by the Iowa Energy Center, the project is a year-long energy benchmarking study to connect selected public facility owners with a web-based benchmarking application to identify buildings that are the best candidates for energy audit investigations and cost-effective improvements.

The program allows participants to identify which buildings are consuming more or less energy than expected (benchmark view) or consuming more or less energy than in a previous year (baseline view). With this knowledge, owners can determine how to appropriately focus attention on various audits, retrofitting and other steps to improve efficiency.



It is estimated there are 6,000 public buildings larger than 5,000 square feet in Iowa. The project will attempt to gather data and benchmark 1,000 buildings in various sectors. To submit your application for consideration, click [here](#).

## Copper and metals theft resurgence; tips are offered



◆ **The Iowa Department of Homeland Security has reported that near-record prices for copper and other metals have spurred a resurgence of theft of common materials in the utility industry.** There has been a significant upturn in reported copper thefts from many sources in recent months, and wind power generators lying on the ground before installation have been a popular target.



The agency offers these reminders to help deter theft: Raise utility staff awareness of the dangers of copper theft and take preventive steps such as securing spare materials at distribution facilities, switch yards and substations. Use physical security measures such as fences, gates, lights and locks; use electronic monitoring and post signs noting the use of it. Establish close relationships with local law enforcement and other emergency responders. Build relationships with local scrap dealers and notify them of thefts to ask their help in identifying and locating stolen materials.

### Mapleton mutual aid, continued from Page 1



Monday, April 11 saw a second wave of utilities join the effort via the IAMU mutual aid system to help re-light gas meters in Mapleton. Organized by gas regional coordinator John Bird of Emmetsburg Municipal Utilities, the effort saw utility employees from Emmetsburg, Hawarden, Orange City, Remsen, Rock Rapids and Sioux Center respond. By the end of the day April 12, electric and gas services have been restored to all in Mapleton who were able to receive them; and more utilities had contacted IAMU and were ready and waiting in the event a third wave of help was needed.



**An estimated 60% of Mapleton was damaged or destroyed by the April 9 tornado.**

"Everything went as well as it possibly could," said Hahn. "We had things back up and running within 48 hours, and that's pretty good when we had to do a full system shut down. The news media said it would be two weeks before we would have the gas going. We did it in two days. The guys who showed up with the mutual aid program were lots of help. They did whatever needed to be done. On a score of one to ten, I'd give them a 20." LeFebvre echoed those comments: "It was a great crew," he said, noting that he had never met most of the utility members from other cities, but, "They knew exactly what to do and got it done."



Larry Sorenson, a utility regulation inspector with the Iowa Utilities Board, has been part of many emergency responses, and said the Mapleton effort was one of the best he's ever seen. "This was a great testament to IAMU's mutual aid program. What I saw, with some very experienced people leading things, and watching the whole process of those guys working together – it was just great to know that there are people who can do that so well. You just don't see that every day. You can talk the talk, but when reality hits, it's great to see things work just the way they're supposed to."

IAMU members should watch their email for more communication soon to come regarding the Mapleton mutual aid response. Learn more about IAMU's mutual aid program [here](#).

**FREE online training for IAMU members!**

**Choose from more than 60 topics.**

**Click [here](#) for more information.**

**Training on Demand**